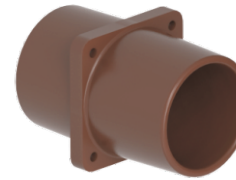
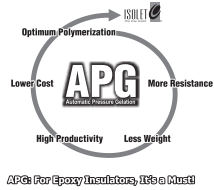


**Modelo / Model / Modelo**

**BI 005 JO4-110**



Umáx. / Um / Umax. (kV)	17,5
Tensão Sup. / Rated Pow. Freq. / Ens. Dielec. (kV)	50
NBI / BIL / BIL (kV)	110
Dist. Escoa. / Creep. Distan. / Dist. Escoa. (mm)	140
Massa / Mass / Masa (kg)	2,460
Temp. Trab. / Work Temp. / Temp. Trab. (°C)	-20 até / up to / hasta +75°C
Cor / Color / Cor	Marrom/Brown/Marrón RAL 8016
Flexão / Bending / Flexion (N)	> 4000

Barramento / Busbar / Barramiento	01 Barra / Canto Vivo 01 Bar / Squared Edge 01 Barra / Rincon Recto	01 Barra / Canto Arredondado 01 Bar / Rounded Edge 01 Barra / Rincon Redondo	Aberta Opened Abierta	02 Barras / Canto Vivo 02 Bars / Squared Edge 02 Barras / Rincon Recto	03 Barras / Canto Vivo 03 Bars / Squared Edge 03 Barras / Rincon Recto																																																																																																																		
Dimensões / Dimensions / Dimensiones (mm)	<table border="1"> <thead> <tr> <th>H</th> <th>L</th> </tr> </thead> <tbody> <tr><td>28</td><td>7</td></tr> <tr><td>28</td><td>7,5</td></tr> <tr><td>30</td><td>7,5</td></tr> <tr><td>35</td><td>13</td></tr> <tr><td>40</td><td>7,5</td></tr> <tr><td>40</td><td>10</td></tr> <tr><td>40</td><td>14</td></tr> <tr><td>41</td><td>6</td></tr> <tr><td>41</td><td>7,5</td></tr> <tr><td>41</td><td>10,5</td></tr> <tr><td>43</td><td>15</td></tr> <tr><td>44</td><td>9</td></tr> <tr><td>44</td><td>14</td></tr> <tr><td>45</td><td>8</td></tr> <tr><td>45</td><td>10</td></tr> <tr><td>45</td><td>13</td></tr> <tr><td>45</td><td>20</td></tr> <tr><td>54</td><td>10,5</td></tr> <tr><td>54</td><td>14</td></tr> <tr><td>55</td><td>7</td></tr> <tr><td>55</td><td>9</td></tr> <tr><td>55</td><td>13</td></tr> <tr><td>55</td><td>15</td></tr> <tr><td>55</td><td>17</td></tr> <tr><td>60</td><td>10</td></tr> <tr><td>60</td><td>15</td></tr> <tr><td>63</td><td>8</td></tr> <tr><td>65</td><td>13</td></tr> <tr><td>70</td><td>18</td></tr> <tr><td>79</td><td>10,5</td></tr> <tr><td>80</td><td>10</td></tr> <tr><td>80</td><td>14</td></tr> <tr><td>80</td><td>17</td></tr> <tr><td>82</td><td>14</td></tr> <tr><td>84</td><td>14</td></tr> <tr><td>85</td><td>13</td></tr> </tbody> </table>	H	L	28	7	28	7,5	30	7,5	35	13	40	7,5	40	10	40	14	41	6	41	7,5	41	10,5	43	15	44	9	44	14	45	8	45	10	45	13	45	20	54	10,5	54	14	55	7	55	9	55	13	55	15	55	17	60	10	60	15	63	8	65	13	70	18	79	10,5	80	10	80	14	80	17	82	14	84	14	85	13	<table border="1"> <thead> <tr> <th>H</th> <th>L</th> </tr> </thead> <tbody> <tr><td>58</td><td>15</td></tr> <tr><td>67</td><td>13</td></tr> <tr><td>106</td><td>17</td></tr> </tbody> </table>	H	L	58	15	67	13	106	17	<table border="1"> <thead> <tr> <th>H</th> <th>L</th> </tr> </thead> <tbody> <tr><td>58</td><td>15</td></tr> <tr><td>67</td><td>13</td></tr> <tr><td>106</td><td>17</td></tr> </tbody> </table>	H	L	58	15	67	13	106	17	<table border="1"> <thead> <tr> <th>H</th> <th>L</th> <th>E</th> </tr> </thead> <tbody> <tr><td>54</td><td>14</td><td>14</td></tr> <tr><td>55</td><td>17</td><td>9</td></tr> <tr><td>65</td><td>13</td><td>10</td></tr> <tr><td>80</td><td>17</td><td>9</td></tr> <tr><td>81</td><td>11</td><td>20</td></tr> </tbody> </table>	H	L	E	54	14	14	55	17	9	65	13	10	80	17	9	81	11	20	<table border="1"> <thead> <tr> <th>H</th> <th>L</th> <th>E</th> </tr> </thead> <tbody> <tr><td>54</td><td>14</td><td>14</td></tr> </tbody> </table>	H	L	E	54	14	14
H	L																																																																																																																						
28	7																																																																																																																						
28	7,5																																																																																																																						
30	7,5																																																																																																																						
35	13																																																																																																																						
40	7,5																																																																																																																						
40	10																																																																																																																						
40	14																																																																																																																						
41	6																																																																																																																						
41	7,5																																																																																																																						
41	10,5																																																																																																																						
43	15																																																																																																																						
44	9																																																																																																																						
44	14																																																																																																																						
45	8																																																																																																																						
45	10																																																																																																																						
45	13																																																																																																																						
45	20																																																																																																																						
54	10,5																																																																																																																						
54	14																																																																																																																						
55	7																																																																																																																						
55	9																																																																																																																						
55	13																																																																																																																						
55	15																																																																																																																						
55	17																																																																																																																						
60	10																																																																																																																						
60	15																																																																																																																						
63	8																																																																																																																						
65	13																																																																																																																						
70	18																																																																																																																						
79	10,5																																																																																																																						
80	10																																																																																																																						
80	14																																																																																																																						
80	17																																																																																																																						
82	14																																																																																																																						
84	14																																																																																																																						
85	13																																																																																																																						
H	L																																																																																																																						
58	15																																																																																																																						
67	13																																																																																																																						
106	17																																																																																																																						
H	L																																																																																																																						
58	15																																																																																																																						
67	13																																																																																																																						
106	17																																																																																																																						
H	L	E																																																																																																																					
54	14	14																																																																																																																					
55	17	9																																																																																																																					
65	13	10																																																																																																																					
80	17	9																																																																																																																					
81	11	20																																																																																																																					
H	L	E																																																																																																																					
54	14	14																																																																																																																					